

AT&T Site Name: RED FISH LAKE  
AT&T Site Number: IDL04521



Existing View from the North, (Residential)



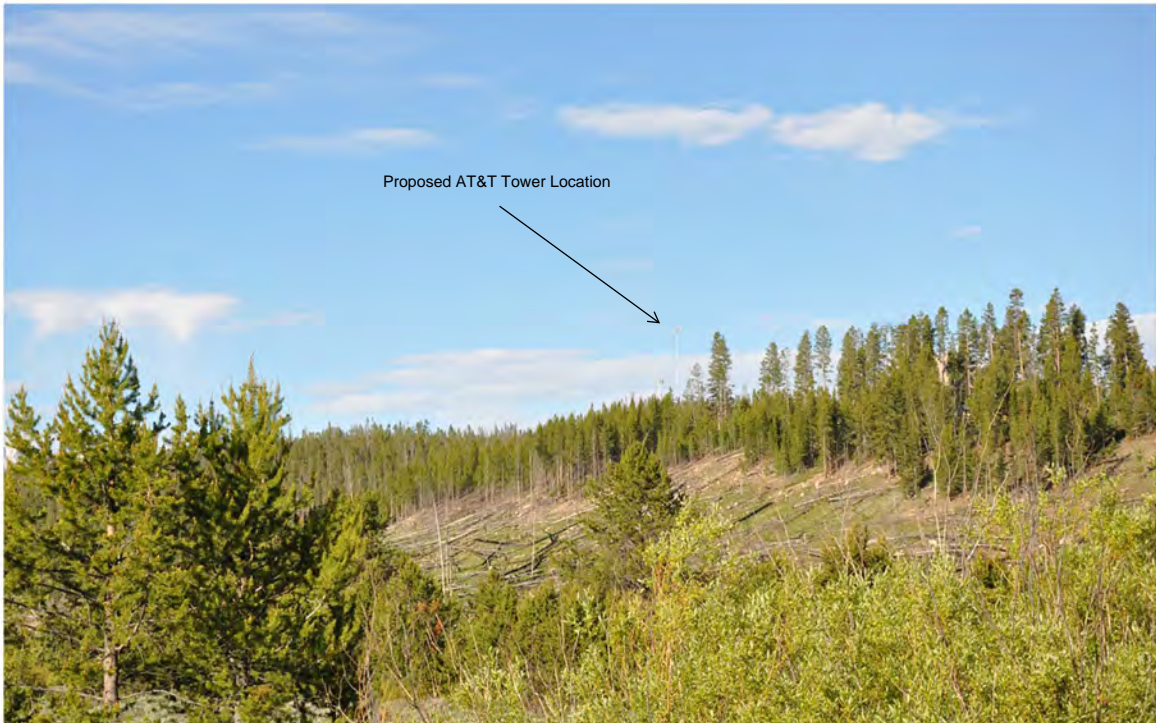
New View from the North, (Residential)



AT&T Site Name: RED FISH LAKE  
AT&T Site Number: IDL04521



Existing View from the Northeast

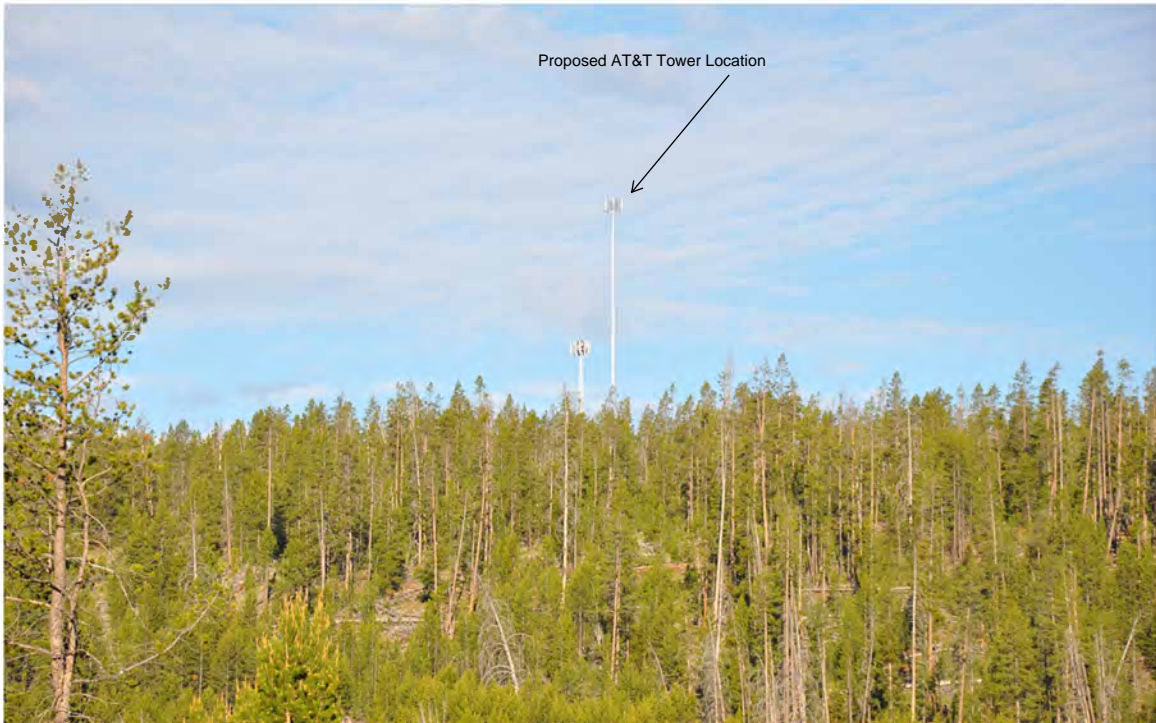


NewView from the Northeast





Existing View from the East



New View from the East





Existing View from the South



New View from the South



AT&T Site Name: RED FISH LAKE  
AT&T Site Number: IDL04521

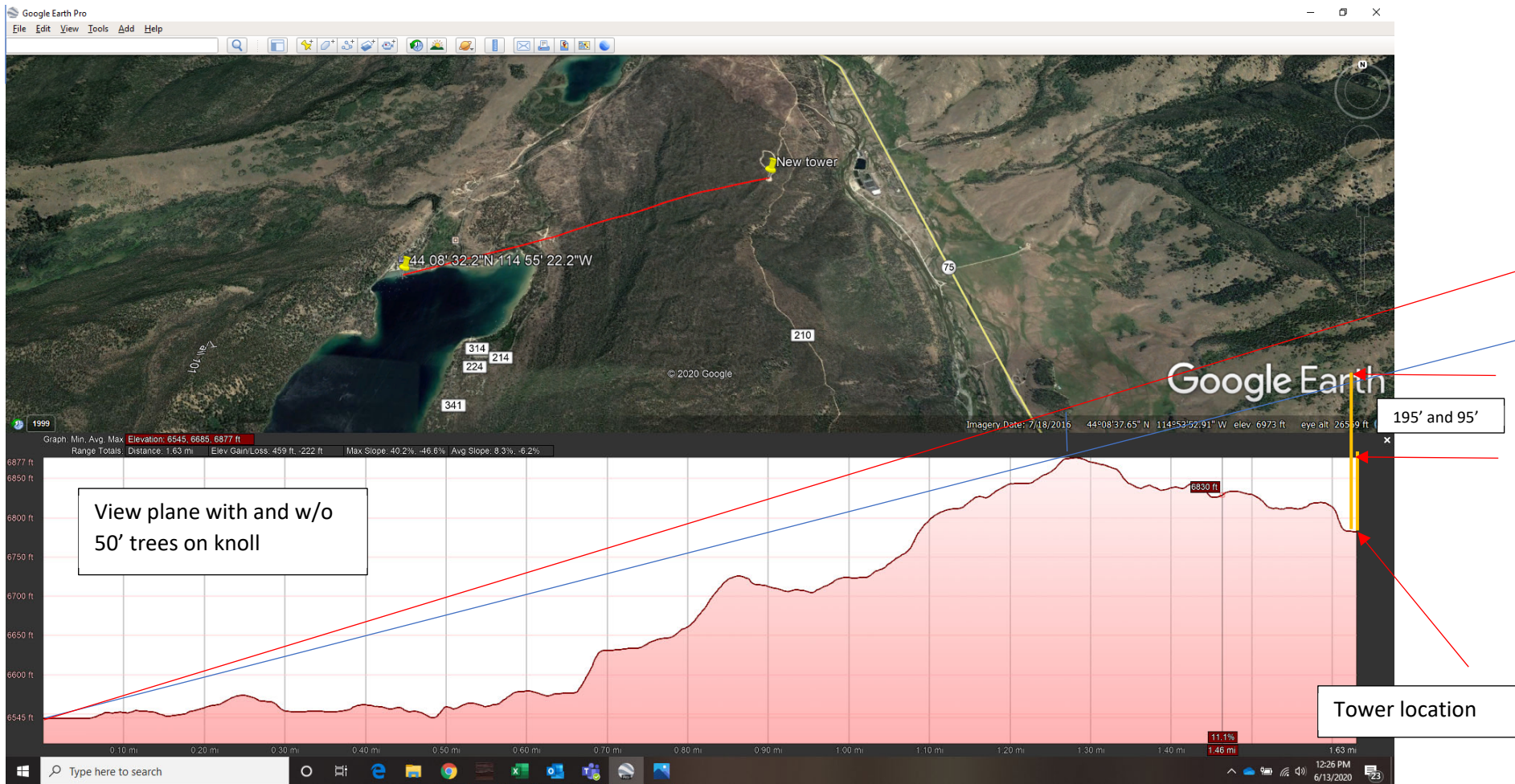


Existing View from the West (Red Fish Lake)



New View from the West (Red Fish Lake)





The new tower at 195' would likely break the view plane (blue line), if there are no trees on the western knoll. With trees on the western knoll the view plane is higher (red line), and it would be unlikely that the new pole would break this plane. In either case, this explains why the current site is difficult/impossible to see from the dock.